

10.27 +/- ACRE TURKEY FARM W/ 4 BR 2 BA HOUSE-SHOP-HOOP BARN-FEED MILL  
 Myerstown/Reistville/Richland Area  
 (3) SKID LOADERS-CORN HEADER-EQUIPMENT

# PUBLIC AUCTION



Saturday, May 30, 2026 at 11:00 AM



629 Weavertown Rd; Myerstown, PA 17067

Directions: From PA-501 between Schaefferstown & Myerstown take Elco Dr 2.4 Mi, Left onto Weavertown Rd to Property on Right. **4 Bedroom 2 Bath 2,352 SF RANCH HOUSE** Built in 1989 w/ Eat-In Kitchen Open to Living & Family Room, Nice Laundry & Oversized 2-Car Attached Garage, Full Finished Basement w/ Woodstove, Utility Room, Cold Cellar, On-Site Well & Septic, Oil Hot Water Heat. **Outstanding 6-Bay 60x132 SHOP** w/ Propane Radiant Floor Heat, (4) 12x14 & (2) 18x14 Overhead Doors Built in 2009 w/ Addition in 2023, ½ Bath and Its Own Sewer. Currently Leased Out for \$3,000 a Month. **63x476 Farmer Boy AG Starter Finisher TURKEY BARN** w/ Earthen Floor Built in 2024, Good Grower Contract Producing \$160,000 a Year! **NEW 40x60 HOOP BUILDING; On-Farm Weigh-Tronix 1 Ton FEED MILL** w/ Witmer Automatic Computer & Controls Supported by (2) 10,000 Bushel Bins + (3) 10-20 Ton Commodity Bins. Farm has 600 Amp Service w/ **100kw STANDBY GENERATOR** w/ 600 Amp Auto Transfer Switch. **Taxes:** \$8,295.26 w/ 2% Discount. Property is in Clean & Green. Jackson Township, ELCO Schools. **NOTE:** An outstanding 10.27 +/- acre farm in the Myerstown/Reistville/Richland Area with tremendous income potential situated on a nice level tract and accessed by a spacious macadam drive and parking area, approximately 4½ acres of recently fenced pasture, balance buildings, yard & parking area. Sellers have purchased a farm in the west and plan to sell. Come prepared to buy this farm with a newer set of buildings and great income potential. **OPEN HOUSE** by appointment (call Joel at 717-383-5606). **TERMS:** \$125,000 Down at Auction, Settlement on July 15, 2026.

SEE MORE INFO & PHOTOS: [www.lhauctionsinc.com](http://www.lhauctionsinc.com)

**LH AUCTIONS INC.**  
 PA-AY002453  
 (717) 383-5606  
 Joel Heisey  
 Los LONGENECKER  
 (484) 256-1323

*We're SOLD on serving you!*  
 WWW.LHAUCTIONSINC.COM

Auction For:  
**Rendell & Mary Beth Weaver**  
 Attorney: Douglas Lehman (717) 569-1600  
 INFORMATION BELIEVED TO BE ACCURATE BUT NOT GUARANTEED  
 See Reverse Side for More Info →





**LH**  
AUCTIONS

10,27 +/- ACRE TURKEY FARM W/ 4 BR 2 BA HOUSE-SHOP-HOOP BARN-FEED MILL

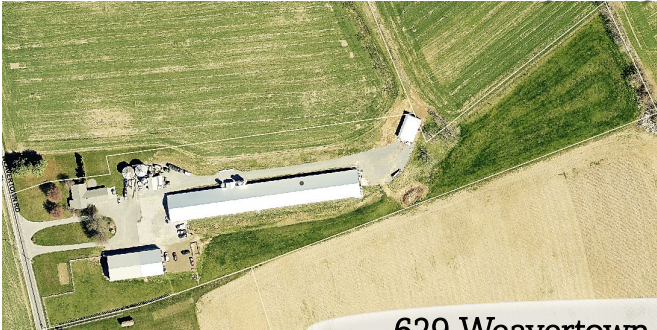
Myerstown/Reistville/Richland Area

(3) SKID LOADERS, CORN HEADER EQUIPMENT

**LH**  
AUCTIONS

# PUBLIC AUCTION

Saturday, May 30, 2026 at 11:00 AM



629 Weavertown Rd; Myerstown, PA 17067



**EQUIPMENT:** 2023 JD 332G Skid Loader Only 350+/- hrs 1 Owner, Full Cab & Weight Kit VGC; 2017 JD 333G Skid Loader 1,237 Orig. Hrs, Serviced w/ New AC & Coupler Bushings; 2012 New Holland L220 Skid Loader w/ 1900 hrs; JD 893 Corn Header w/ New Knives & Recent Service; New 25' Diamond Ridge Header Cart; Brent 674 Grain Cart w/ Tarp GC; Woods 3pt 72" Bushhog VGC; Creekview 3pt Litter Pulverizer 6' Wide Low Use; Westfield WR100-61 Auger w/ Tubs GC; PBZ 500 Gal. Poultry House Washer Trailer Lk New; Woodchuck Bedding Spreader Quick Attach Lk New; Lk New Virnig Tree Puller; 8' Round Water Tub; 10' Plastic Feed Trough on Stands; 200 Gal. Propane Tank GC; 300 Gal. Diesel Tank.

**NOTE:** The Weavers are selling a few pieces that they are not moving to the new farm, giving you the opportunity to buy clean well-maintained equipment right off the farm!

**AUCTION ORDER:** Equipment sells approx. 11:30 AM. No small items!

**TERMS:** Cash, Good PA Check or Credit Card (w/ 3% fee). No Out-of-State Checks.

**LH AUCTIONS INC.**  
PA-AY002453

(717) 383-5606  
Joel Heisey

Los LONGENECKER  
(484) 256-1323

*We're SOLD on serving you!*

WWW.LHAUCTIONSINC.COM

NAA AUCTIONEER

SEE MORE INFO & PHOTOS: [www.lhauctionsinc.com](http://www.lhauctionsinc.com)



Auction For:  
**Rendell & Mary Beth Weaver**

Attorney: Douglas Lehman (717) 569-1600  
INFORMATION BELIEVED TO BE ACCURATE BUT NOT GUARANTEED

