

# Myerstown/Richland Area Country Cape Cod On .63 Acres **PUBLIC AUCTION** Tuesday, April 21st 2026 5pm

Located: 470 Weavertown Rd. Richland PA 17067



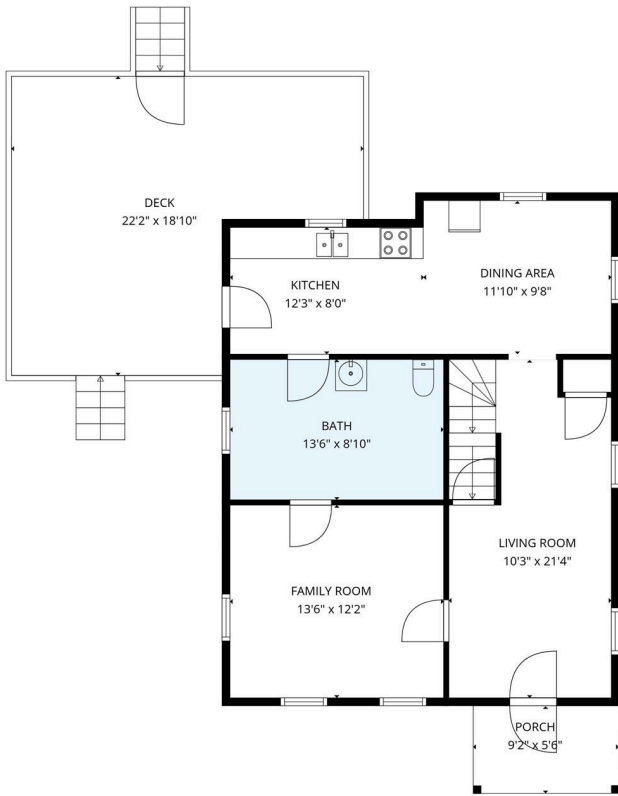
### REAL ESTATE

Country Cape Cod in the Myerstown/Richland Area on .63 Acres, 1287 Sq Ft Living Area, Eat-In Kitchen, Living Room, Main Floor Laundry & Half Bath, Bedroom, Upper Level has 2 Bedrooms and a Full Bath, Some Log Walls, Basement, Oil Hot Air Heat, Sizable Deck, 28x40 Detached 3 Car Garage, Well, On-Site Septic, ELCO Schools, Jackson Twp. Taxes-\$3450 Zoning-Agricultural.

**Note:** This home is in fair condition and could use some renovations. Ideal starter home on a country .63-acre lot that backs to farmland. Just a couple of minutes from the ELCO Schools. 69

**Terms:** 10% Down Day Of Sale, Balance Within 45 Days.

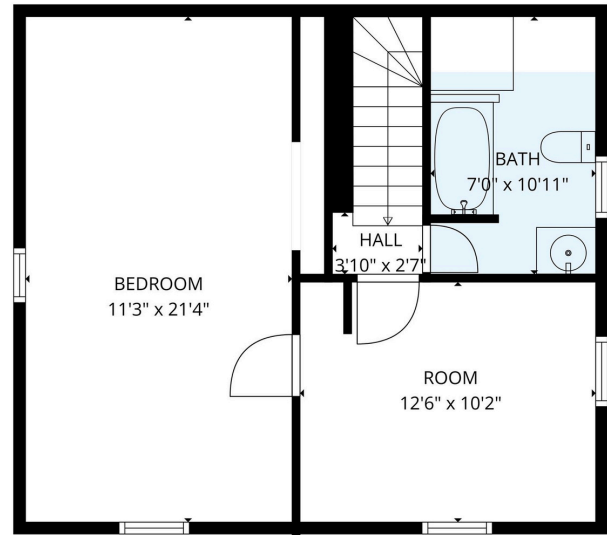
**OPEN HOUSE DATES: Sat. April 4<sup>th</sup> & 11<sup>th</sup> 1-3pm**



**TOTAL: 783 sq. ft**

1st floor: 0 sq. ft, 2nd floor: 733 sq. ft, 3rd floor: 50 sq. ft  
EXCLUDED AREAS: GARBAGE: 401 sq. ft, GARAGE: 607 sq. ft, PORCH: 51 sq. ft,  
DECK: 332 sq. ft, UNDEFINED: 12 sq. ft, LOW CEILING: 104 sq. ft,  
BEDROOM: 179 sq. ft, ROOM: 102 sq. ft, FULL BATH: 59 sq. ft,  
WALLS: 184 sq. ft

MEASUREMENTS ARE DEEMED RELIABLE BUT ARE NOT GUARANTEED.



**TOTAL: 783 sq. ft**

1st floor: 0 sq. ft, 2nd floor: 733 sq. ft, 3rd floor: 50 sq. ft  
EXCLUDED AREAS: GARBAGE: 401 sq. ft, GARAGE: 607 sq. ft, PORCH: 51 sq. ft,  
DECK: 332 sq. ft, UNDEFINED: 12 sq. ft, LOW CEILING: 104 sq. ft,  
BEDROOM: 179 sq. ft, ROOM: 102 sq. ft, FULL BATH: 59 sq. ft,  
WALLS: 184 sq. ft

MEASUREMENTS ARE DEEMED RELIABLE BUT ARE NOT GUARANTEED.

**Sale For: Douglas Herr**

Auctioneers: L&H AUCTIONS INC. PA-AU002453

Les Longenecker 484-256-1323 Joel Heisey 717-383-5606

heiseyauctions.com